



3651 N Highway 89 • Chino Valley, AZ 86323
(928) 636-7080 • www.p-a-g.net

DODGE PICKUP MANUAL TRANSMISSION SHIFT LINKAGE KIT (NON-HYDRAULIC) (FOR USE WITH PA KIT# 612, 613, 632, 633, 652, 653) INSTALLATION INSTRUCTIONS KIT# 6135

Before Starting Installation

NOTE

Kit parts are prefaced by the word *kit* and appear in **bold** print.

1. Carefully read all warnings and instructions completely before beginning.
2. Verify all parts have been received in this kit by checking the parts list at the end of this document.

NOTE

If parts are missing from kit, please be prepared to provide the following information:

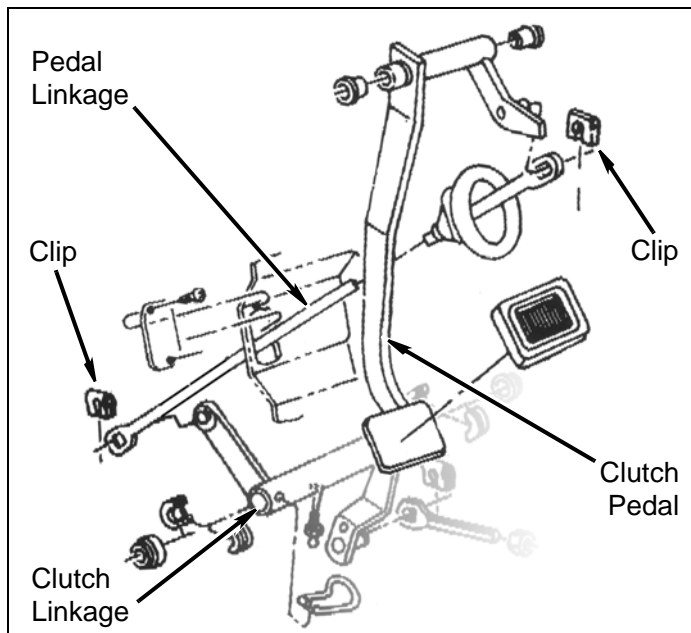
1. **Name** of purchase location
2. **Bar Code** on side of box
3. **Date** above bar code
4. **Date** inside box cover
5. **Inspector #** from inside box cover

3. **Only install this kit on the vehicle for which it is specified.** If anytime during the installation you encounter something different from what is outlined in the instructions, call technical support at (928) 636-7080.
4. Park vehicle on a clean, dry, flat, level surface and block tires so vehicle cannot roll in either direction.

Prepare to Install Kit

Underside of Vehicle

1. If not yet completed, disconnect clips and O.E. clutch linkage from clutch pedal.



⚠ WARNING

Before you install this kit, read and understand all instructions, warnings, cautions, and notes in this instruction sheet and in the vehicle owner's manual.

⚠ CAUTION

Proper installation of this kit requires knowledge of the factory recommended procedures for removal and installation of original equipment components. We recommend that the factory shop manual and any special tools needed to service your vehicle be on hand during the installation. Installation of this kit without proper knowledge of the factory recommended procedures may affect the performance of these components and the safety of the vehicle. We strongly recommend that a certified mechanic familiar with the installation of similar components install this kit.

⚠ WARNING

Always wear eye protection when operating power tools.

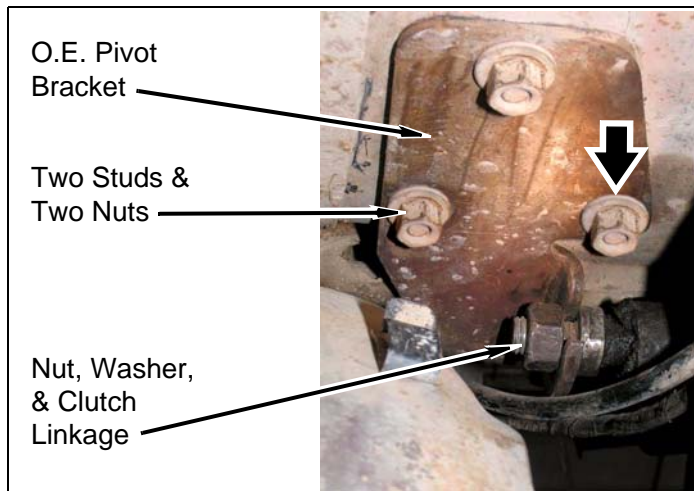
⚠ WARNING

Before you install this kit, block the vehicle tires to prevent the vehicle from rolling.

NOTE

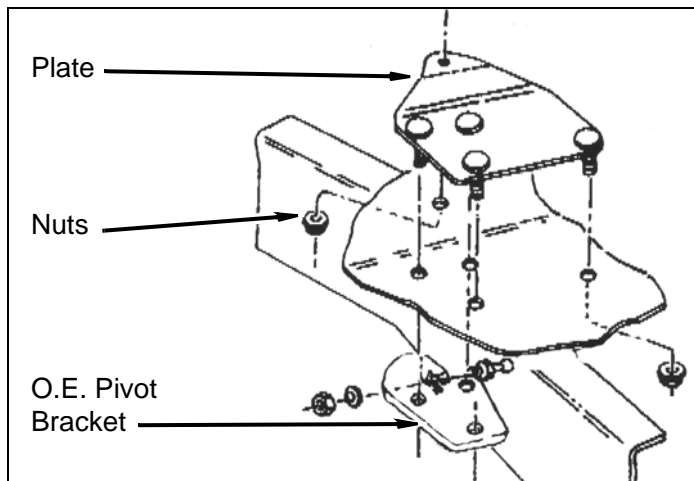
Performance Automotive Group recommends using the Loctite® supplied in the kit on the threads of all kit nuts and bolts unless specified otherwise in these instructions.

2. Remove nut, washer, and driver clutch linkage pivot from O.E. pivot bracket.

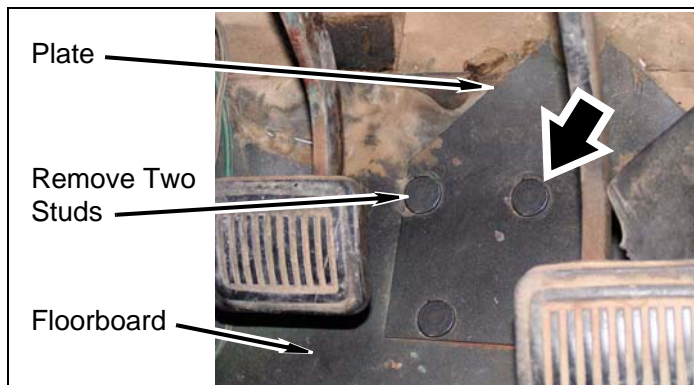


Inside of Vehicle

1. Remove hardware and driver door sill plate from floorboard.
2. Pull carpet up from beneath pedals.
3. Remove five nuts and plate from floorboard beneath pedals.



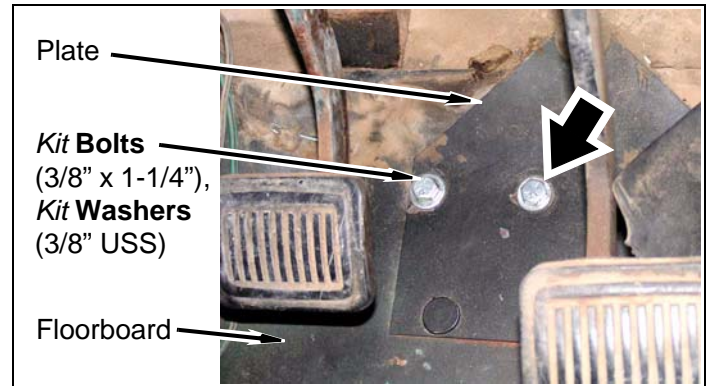
4. Remove two studs from plate.



Install Kit

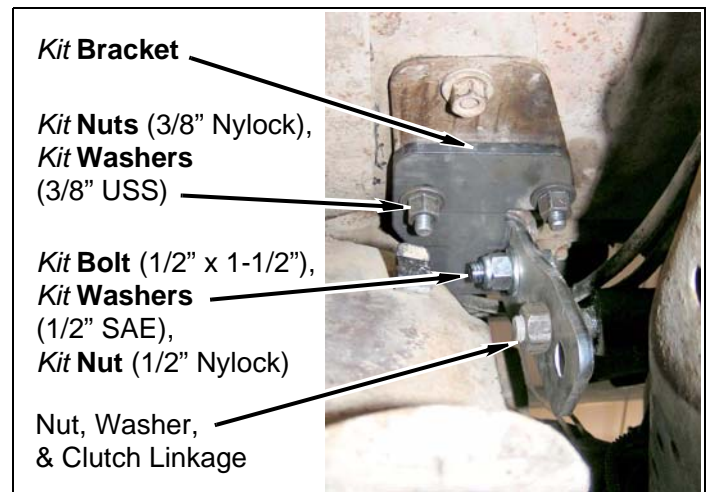
Inside of Vehicle

1. Install plate onto floorboard beneath pedals with three nuts, two *kit bolts* (3/8"-16 x 1-1/4") and two *kit washers* (3/8" flat USS).

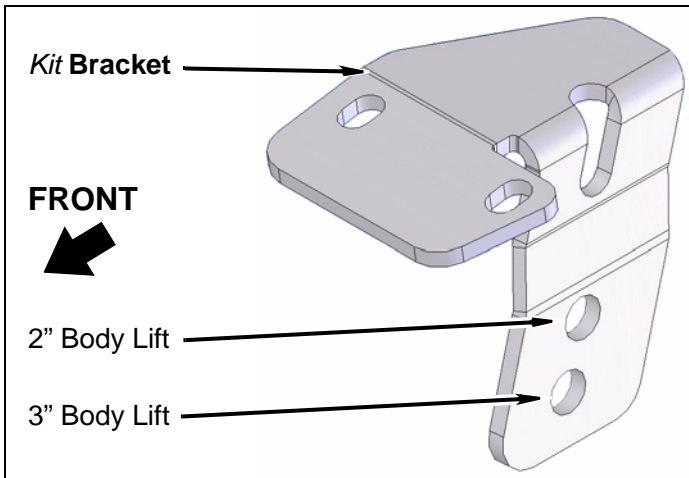


Underside of Vehicle

1. Install *kit bracket* onto O.E. pivot bracket with two *kit nuts* (3/8"-16 Nylock, two *kit washers* (3/8" flat USS), *kit bolt* (1/2"-13 x 1-1/2"), two *kit washers* (1/2" flat SAE), and *kit nut* (1/2"-13 Nylock). **TIGHTEN *kit nuts* and *kit bolts*.**



2. **2" Body lift kit:** Install driver linkage pivot into upper hole of **kit bracket** with washer and nut.
3. **3" Body lift kit:** Install driver linkage pivot into lower hole of **kit bracket** with washer and nut.



Inside of Vehicle

1. Lay carpet down beneath pedals.
2. Install door sill plate onto floorboard with hardware.
3. Continue with PA body lift kit installation instructions including cutting and extending pedal linkage rod.

After Completing Installation

Miscellaneous

1. Check all fasteners to ensure they are tight.
2. Ensure all wires, hoses, cables, etc. are properly connected and there is ample slack.

Dynamic Vehicle Check

1. Check steering in both directions to ensure that there is no bind. Check operation of clutch, brake system, and parking brake. Check operation of transmission and transfer case. Ensure there is full engagement in all gears and 4WD ranges. Check battery connections and electrical component operations. Test-drive vehicle.

⚠ WARNING

Retorque all fasteners after 500 miles and after off road use. All body lift components should be visually inspected and fasteners retorqued during routine vehicle servicing.

⚠ CAUTION

Performance Automotive Group does not recommend any particular wheel and tire combinations for use with its body lifts and cannot assume responsibility for the customer's choice of wheels and tires. Refer to your owner's manual for recommended tire sizes and warnings related to the use of oversized tires. Larger wheel and tire combinations increase stress and wear on steering and suspension components, which leads to increased maintenance and higher risk for component failure. Larger wheel and tire combinations also alter speedometer calibration, braking effectiveness, center of gravity, and handling characteristics. Consult an experienced local off road shop to find what wheel and tire combinations work best with your vehicle.

NOTE

All warranty information, instruction sheets, and other documents regarding the installation of this product must be retained by the vehicle owner. Information contained in the instructions and on the warranty card will be required for any warranty claims. The vehicle owner needs to understand the modifications made to the vehicle and how they affect vehicle handling and performance. Failure to provide the customer with this information can result in damage to the vehicle and severe personal injury.

Kit Parts List

Qty.	Description
1	Bracket
1	HP6135 (Hardware Bag)
2	Bolt (3/8"-16 x 1-1/2")
1	Bolt (1/2"-13 x 1-1/2")
2	Nut (3/8"-16 Nylock)
1	Nut (1/2"-13 Nylock)
4	Washer (3/8" flat USS)
2	Washer (1/2" flat SAE)