



3651 N Highway 89 • Chino Valley, AZ 86323
(928) 636-7080 • www.p-a-g.net

CHEVY K-5 BLAZER BODY BUSHING KIT INSTALLATION INSTRUCTIONS 1967-1972 **KIT# 11008**

⚠ WARNING
Before you install this kit, read and understand all instructions, warnings, cautions, and notes in this instruction sheet and in the vehicle owner's manual.

⚠ CAUTION
Proper installation of this kit requires knowledge of the factory recommended procedures for removal and installation of original equipment components. We recommend that the factory shop manual and any special tools needed to service your vehicle be on hand during the installation. Installation of this kit without proper knowledge of the factory recommended procedures may affect the performance of these components and the safety of the vehicle. We strongly recommend that a certified mechanic familiar with the installation of similar components install this kit.

⚠ WARNING
DO NOT combine suspension, body, or other lift devices. Use of vehicle with combined lifts may result in unsafe and/or unexpected handling characteristics.

⚠ WARNING
This kit should only be installed on a vehicle that is in good working condition. Before you install the kit, thoroughly inspect the vehicle for corrosion or deformation of the sheet metal around the factory body mounts. If the vehicle is suspected to have been in a collision or misused, do not install this kit. Off-road use of your vehicle with this kit installed may increase the stress applied to the factory body mounts. We do not recommend that any vehicle with a bushing kit installed be involved in any extreme off-road maneuvers such as jumping. Failure to observe this warning may result in serious personal injury and/or severe damage to your vehicle.

⚠ WARNING
Always wear eye protection when operating power tools.

⚠ WARNING
Before you install this kit, block the vehicle tires to prevent the vehicle from rolling.

⚠ WARNING
Accidental deployment of the air bag can result in serious personal injury or death. To avoid accidental deployment during installation of the kit, the Supplemental Restraint System (SRS, or airbag) must remain deactivated. Do not allow anyone near the airbag during installation. Refer to the factory service manual or owner's manual for the recommended procedure to disable the SRS. After you install the kit, reactivate the SRS before driving the vehicle.

NOTE
Performance Automotive Group recommends using the Loctite® supplied in the kit on the threads of all kit nuts and bolts unless specified otherwise in these instructions.

Before Starting Installation

NOTE

Kit parts are prefaced by the word *kit* and appear in **bold** print.

1. Carefully read all warnings and instructions completely before beginning.
2. Verify all parts have been received in this kit by checking the parts list at the end of this document.

NOTE

If parts are missing from kit, please be prepared to provide the following information:

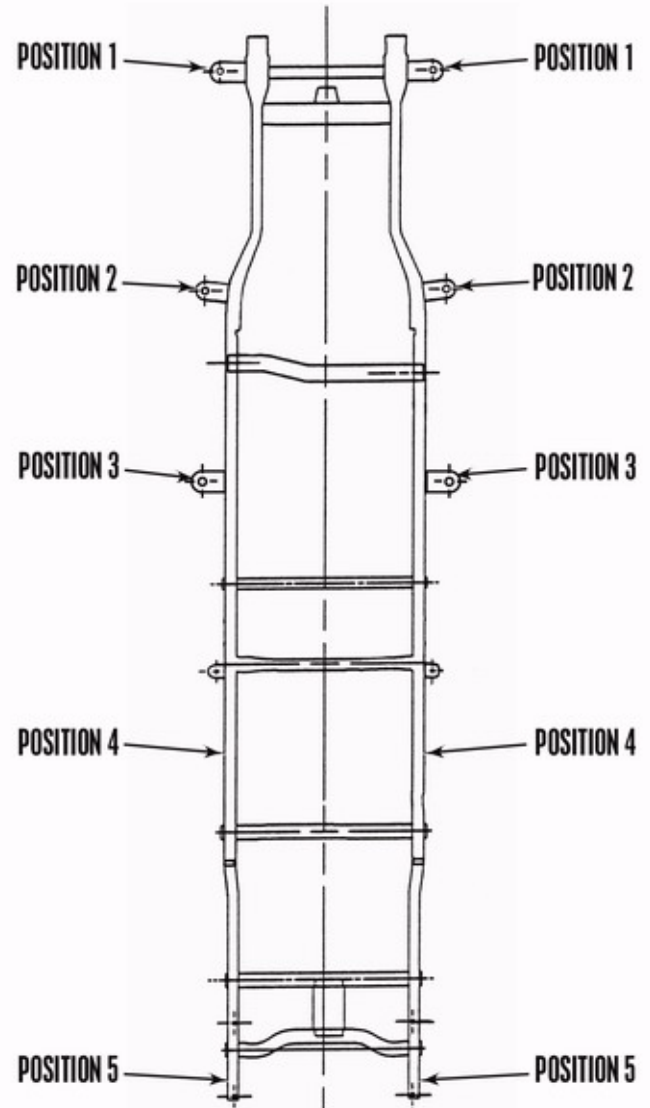
1. **Name** of purchase location
 2. **Bar Code** on side of box
 3. **Date** above bar code
 4. **Date** inside box cover
 5. **Inspector #** from inside box cover
3. **Only install this kit on the vehicle for which it is specified.** If anytime during the installation you encounter something different from what is outlined in the instructions, call technical support at (928) 636-7080.
 4. Park vehicle on a clean, dry, flat, level surface and block tires so vehicle cannot roll in either direction.

Engine Compartment

1. Disconnect both battery cables. Disconnect negative cable first, then positive cable.

Prepare to Install Kit

1. Apply appropriate amount of rust penetrant onto body mount bolts in advance. Repeat if necessary.
2. Loosen five driver side mount bolts.
3. Remove five passenger side mount bolts.



Install Kit

⚠ WARNING

Use extreme caution when lifting the body from the frame. To prevent serious personal injury, ensure the lifting device is securely placed. Keep your hands out from between the bed and frame.

⚠ CAUTION

When jacking up body use a long enough 2 x 4 or 4 x 4 to ensure support. Never position jack directly on body panels.

⚠ CAUTION

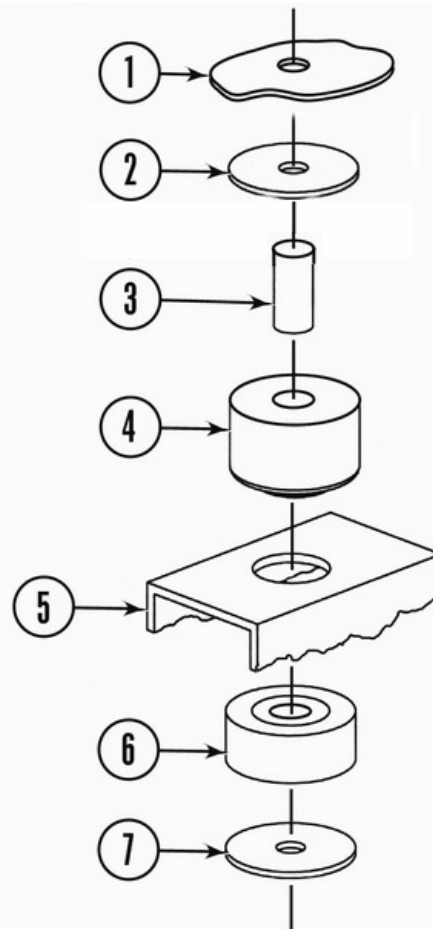
Continually check hoses, wires, lines, etc. to be sure that everything is flexing properly and not binding, or damage to the vehicle could result. Be especially careful of the a/c hoses at the fire wall, the belt pulley, and at the core support. Ensure brake lines stretch while lifting. Bending the lines to gain ample slack may be necessary. Be extremely careful not to kink the lines.

⚠ WARNING

Failure to replace the O.E. body mounting hardware in the stock locations could result in serious personal injury or damage to the vehicle.

1. Using hydraulic floor jack, slowly lift passenger side cab sufficiently to remove O.E. body mounts and install **kit bushings**.
2. Remove five O.E. body bushings from passenger side.

3. Install **kit bushings**, **kit washers**, and **kit sleeves** onto frame mounts.



4. Lower passenger side body onto **kit bushings**.
5. Clean and install five O.E. body mount bolts. **DO NOT TIGHTEN**.
6. Repeat above steps for driver side body mount bushings.
7. Remove ten body mount bolts and apply a small amount of Loctite® onto threads and install into each body mount. **TIGHTEN** body mount bolts to O.E. specification.

After Completing Installation

Engine Compartment

1. Connect both battery cables. Connect positive cable first, then negative cable.

Miscellaneous

1. Check all fasteners to ensure they are tight.
2. Ensure all wires, hoses, cables, etc. are properly connected and there is ample slack.

Dynamic Vehicle Check

1. Check steering in both directions to ensure that there is no bind. Check operation of clutch, brake system, and parking brake. Check operation of transmission and transfer case. Ensure there is full engagement in all gears and 4WD ranges. Check battery connections and electrical component operations. Test-drive vehicle.

⚠ WARNING

Retorque all fasteners after 500 miles and after off road use. All body lift components should be visually inspected and fasteners retorqued during routine vehicle servicing.

NOTE

All warranty information, instruction sheets, and other documents regarding the installation of this product must be retained by the vehicle owner. Information contained in the instructions and on the warranty card will be required for any warranty claims. The vehicle owner needs to understand the modifications made to the vehicle and how they affect vehicle handling and performance. Failure to provide the customer with this information can result in damage to the vehicle and severe personal injury.

Kit Parts List

Position 1

1. Body
2. Kit 2-1/2" washer, 7/16" ID
3. Kit 11-105 bushing
4. Frame
5. Kit 11-112 bushing
6. Kit 7/8" x 5/8" x 1.960" sleeve
7. Kit 2" washer, 7/16" ID

Position 2

1. Body
2. Kit 3" washer, 9/16" ID
3. Kit 11-109 bushing
4. Frame
5. Kit 11-111 bushing
6. Kit 7/8" x 11/16" x 1.8" sleeve
7. Kit 2" washer, 1/2" ID

Position 3, 4, 5, 6

1. Body
2. Kit 3" washer, 9/16" ID
3. Kit 11-110 bushing
4. Frame
5. Kit 11-112 bushing
6. Kit 7/8" x 11/16" x 1.8" sleeve
7. Kit 2" washer, 3/8" ID